

CERTIFICATE OF LOCATION OF GOVERNMENT CORNER

WEST 1/4 Corner of Section 33, Township 105, Range 42, 5TH P.M.

STATE OF MINNESOTA, County of MURRAY

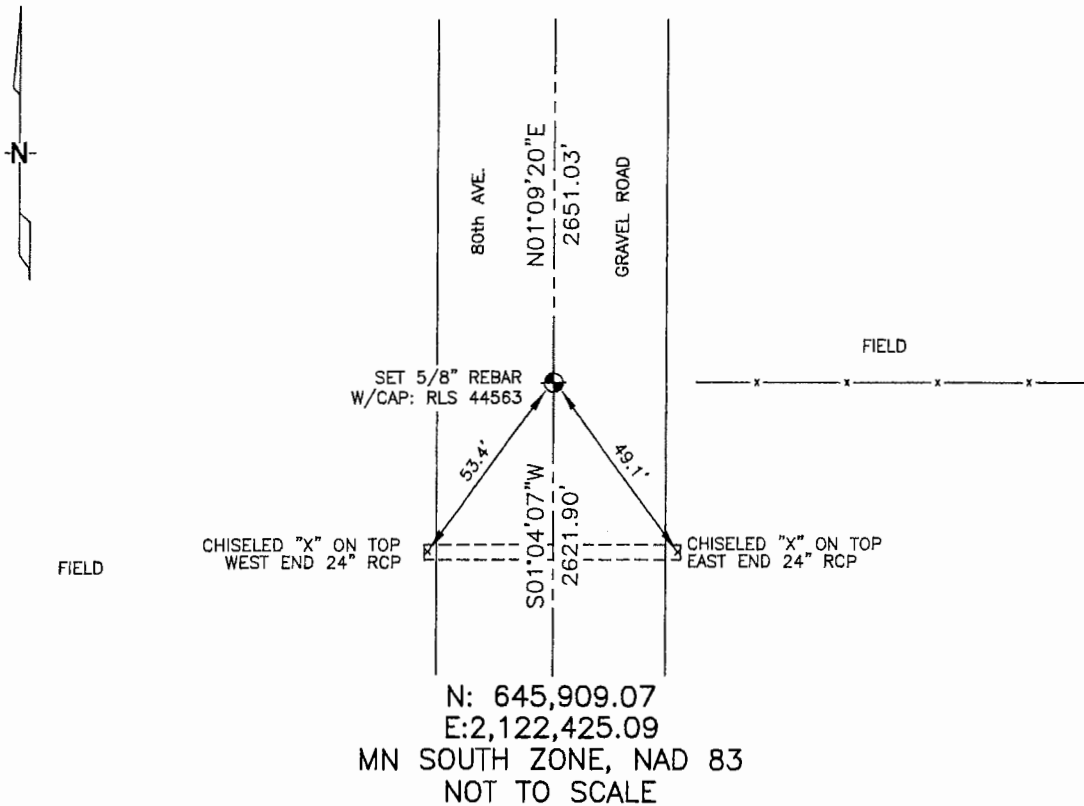
At the corner location shown on the sketch :

On _____ found _____

left monument as found, lowered monument, removed monument (explain)

On 3/19/2006 set 5/8" REBAR WITH CAP: RLS 44563,
OPPOSITE FENCE LINE RUNNING EAST.

Sketch of reference ties



Statement of evidence relative to this corner location is on back page

I hereby certify that this document and the data contained herein was prepared by me or under my direct supervision.

Thomas V. Zeff 4/24/06
Thomas V. Zeff Date

Registration No. 44563

- Land Surveyor, Professional Engineer
- County Surveyor, County Engineer

OFFICE OF THE COUNTY RECORDER

County of _____

SEP 28 2006

I hereby certify that this document was filed in the Co. Recorders office at _____ .M. on the day of _____ A.D. , 20

County Recorder James V. Johnson
By _____, Deputy

DOCUMENT NO. _____

STATEMENT OF EVIDENCE:

WEST 1/4 CORNER, SECTION 33, T. 105 N., R. 42 W.,
MURRAY COUNTY, MINNESOTA

- 1861 D.W. Wellman & S.S. Smoot, US. Deputy Surveyors, monumented corner.
- ? Date Murray Co., placed concrete stone on corner.
Ties: W-34.8' to tack in corner post;
NW-61.1' to tack in seconds fence post.
- ? Date Murray Co., found concrete monument, 3" below grade.
Ties: W-46.3' to nail & cap in 1st post;
E-36.3' to nail & cap in corner post;
NE-40.6' to 1st steel post.
- 3/09/2006 Ulteig Engineers, Inc., Survey Crew, Brain Payne Party Chief, fence line going east & nothing in road.
Set a 5/8" rebar with cap: RLS 44563, opposite fence line.
Ties: SW-53.4' to chiseled "X", top, W end, 24" C.M.P.;
SE-49.1' to chiseled "X", top, E end, 24" C.M.P.;
N-2651.03' to NW corner, Section 33;
S-2621.90' to SW corner, Section 33.